

CHARLOTTE MINTY

INTERIOR DESIGN

How CMID works

This explains CMID's general interior design process in more detail.

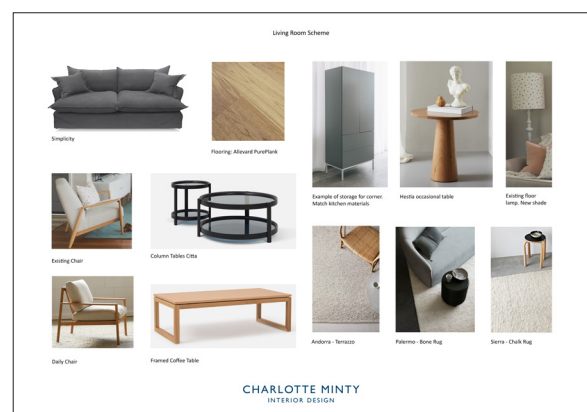
To accommodate the specific needs of a project, you can select whichever part(s) of the process for CMID to work on. We will always work with you to tailor our services to your requirements and budget.

Initial engagement:

- An initial phone call to better understand the project and how CMID can assist.
- An on-site meeting to further assess the project's scope.
- Providing a fee proposal outlining the scope of work, price structure and expected project timeline. In most situations, CMID is able to present the proposal in person to walk you through it. Here we can answer any questions you might have and identify any proposal adjustments, if needed.

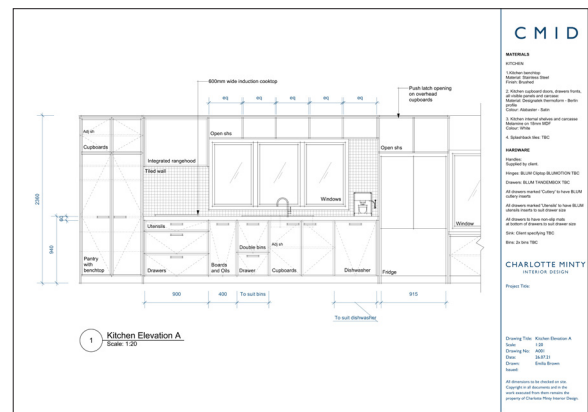
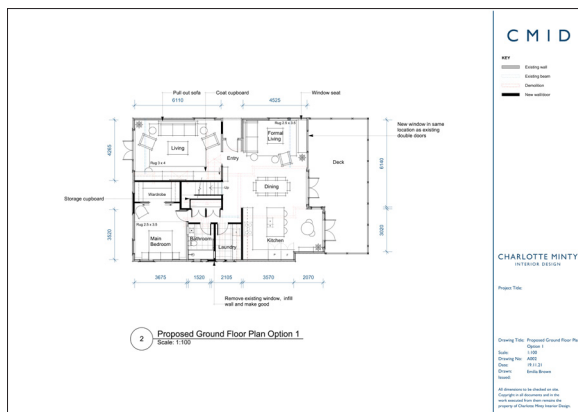
Design concept:

- Commence space planning, if needed. This can involve structural changes and redefining room function. This is presented as CAD drawings of proposed floor plan(s).
- Prepare preliminary concept designs. This includes CAD drawings of elevations, sections, details and custom joinery.
- Create scheme pages. This can consist of product pages, material boards, lighting product pages, inspiration/example images. We regularly present fabric samples, hardware samples, tile samples etc at this stage to communicate our direction.
- Develop early concepts for furniture, soft furnishings, art, and accessories.



Design development:

- Complete technical drawings and designs to provide to clients.
- Finalise all interior selections (fixtures, fittings, finishes)
- Develop lighting/electrical plans and preparing the fixtures, fittings and finishes schedules
- Organise pricing and quotes for plumbing, joinery, lighting, furniture etc.
- Assist the client in tendering the project/engaging a builder to complete the works.
- Approach partners for building consents and application, if necessary. This involves engaging with architects, architectural designers, and structural engineers.



Monitoring and coordinating the fit-out:

- Inspect the construction progress on site, including regular check-ins with builders and other contractors to ensure the project is on track. CMID helps liaise between the main contractor and the client, and to coordinate any building work with the agreed design concept. We do not act as on-site project managers.
- Arrange on behalf of the client the purchase of various items, such as fixtures, fittings, finishes, lighting, flooring (including access to trade discount, where available).
- Engage with trusted suppliers to collect products and samples.

Procurement and finishing touches:

- Develop a design concept for furniture, soft furnishings, art, and accessories
- Select and order furniture/accessories for the project
- Organise the delivery of items to site, and helping to install and style those items.